

# Neue SNMP/Web Karten

- ▶ **SNMP/Web Minislot Karte**
- ▶ **SNMP/Web Transverse Karte**

[www.mgeups.com](http://www.mgeups.com)

THE UNINTERRUPTIBLE POWER PROVIDER

## 2 new cards for UPS monitoring via SNMP + Web

### ▶ SNMP/Web Minislot card Ref 66244

- > form factor : fits in the mini-slot of the Line interactive and small ON-Line products
- > UPS range : Pulsar Evolution / Extreme C / ESV+ / EX 7&10
- > fully replaces SNMP card ref 66245



### ▶ SNMP/Web Transverse card Ref 66074

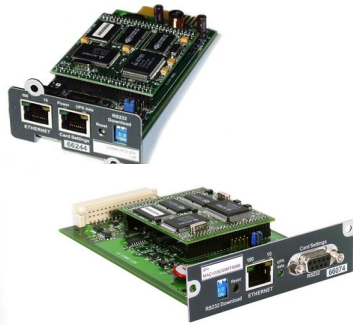
- > form factor : I2C Transverse Communication Card
- > UPS range : Extreme, Galaxy 3000, Galaxy PW and other UPSs through Multislot
- > fully replaces SNMP card ref 66062



**2 form factors  
1 unique firmware => same features !**

# Features

SNMP/Web cards

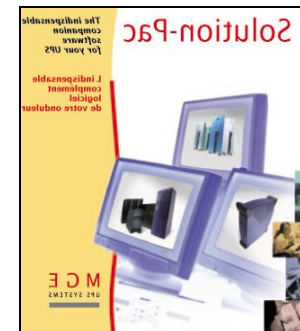
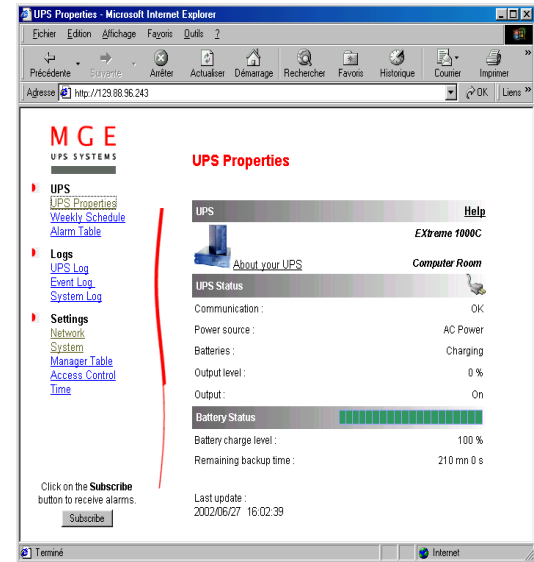


HTTP

SNMP

**UPS monitoring  
from a simple browser  
(Internet Explorer,  
Netscape Navigator, ....)  
+  
card configuration**

**UPS monitoring  
from MGE tools  
(UMConsole, UM Vision)  
or from any NMS  
+  
system shutdown  
with UM-Client**



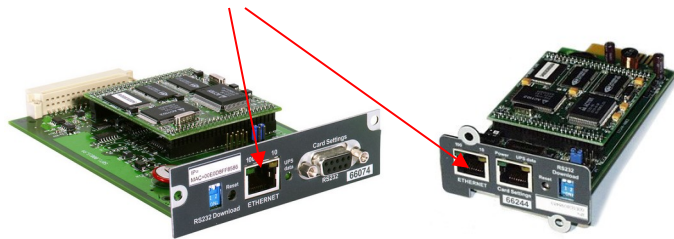
# New features

SNMP/Web cards

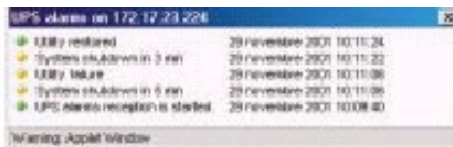
	<b>New SNMP/Web cards Ref 66074 &amp; 66244</b>	<b>Previous SNMP cards Ref 66062 &amp; 66245</b>
Ethernet connection	10 & <b>100</b> MB	10 MB only
UPS Monitoring	<b>Web browser (HTTP)</b> NMS (SNMP) MGE UM-Console/Vision (SNMP)	No NMS (SNMP) MGE UM-Console/Vision (SNMP)
Event notification	SNMP traps <b>Java applet for the browser</b>	SNMP traps
Log file management	<b>Exportable logged data</b>	No
Connected clients	up to <b>32</b> clients	up to 8 clients (Ref 66245) up to 24 clients (Ref 66062)
Ease of Installation	<b>Web interface for card settings</b> <b>Auto-discovery of UPSs</b> <b>Customizable</b> community name & trap port number	No No No

## 2 key points on the MGE SNMP/Web cards

- ▶ 10 & 100 Mb Ethernet connection




- ▶ a **Java applet** can be activated to notify UPS alarms to the administrator (this feature is unique to MGE)



- ▶ **Logs**
  - [UPS Log](#)
  - [Event Log](#)
  - [System Log](#)
- ▶ **Settings**
  - [Network](#)
  - [System](#)
  - [Manager Table](#)
  - [Access Control](#)
  - [Time](#)

Click on the **Subscribe** button to receive alarms.



**UPS Status**

Communicati

Power source

Batteries :

Output level :

Output :

**Battery Statu**

Battery charg

Remaining b

Last update :  
2002/06/27

# Monitoring page within a browser

SNMP/Web cards

**MGE**  
UPS SYSTEMS

- UPS
  - [UPS Properties](#)
  - [Weekly Schedule](#)
  - [Alarm Table](#)
- Logs
  - [Measurements](#)
  - [Event Log](#)
  - [System Log](#)
- Settings
  - [Network](#)
  - [System](#)
  - [Manager Table](#)
  - [Access Control](#)
  - [Time](#)

Click on the **Subscribe** button to receive alarms.

### UPS Properties

UPS

About your

UPS Status

Weekly Schedule

### Event Log data

Evolution 800

Date (yyyy/mm/dd)	Time (hh:mm:ss)	Event Description
2002/11/06	14:22:50	Utility failure
2002/11/06	14:22:51	UPS off sequence started
2002/11/06	14:22:51	Outlet 1 off sequence started
2002/11/06	14:22:51	Outlet 2 off sequence started
2002/11/06	14:22:51	Output on battery
2002/11/06	14:22:51	Utility restored
2002/11/06	14:22:51	Return on UPS
2002/11/06	14:22:51	Utility failure
2002/11/06	14:22:51	UPS off sequence started
2002/11/06	14:22:51	Outlet 1 off sequence started
2002/11/06	14:22:51	Outlet 2 off sequence started

### Measurements

Evolution 800

Log Date (yyyy/mm/dd)	Log Time (hh:mm:ss)	Input Voltage (Volt)	Input Frequency (Hertz)	Output Voltage (Volt)	Output Load (%)	Battery Capacity (%)	Remaining Time (min)
2002/11/06	15:00:00	225	50	225	6	93	67
2002/11/06	15:01:00	225	50	225	6	93	69
2002/11/06	15:02:00	225	49	225	6	93	67
2002/11/06	15:03:00	224	49	224	6	93	67
2002/11/06	15:04:00	224	49	225	6	93	67
2002/11/06	15:05:00	224	49	224	6	93	67
2002/11/06	15:06:00	224	50	224	6	93	67
2002/11/06	15:07:00	225	50	224	6	93	67
2002/11/06	15:08:00	224	50	224	6	93	67
2002/11/06	15:09:00	225	49	225	6	93	67
2002/11/06	15:10:00	224	50	224	6	93	67

# Settings through web interface

**MGE**  
UPS SYSTEMS

**UPS Properties**

- UPS
  - [UPS Properties](#)
  - [Weekly Schedule](#)
  - [Alarm Table](#)
- Logs
  - [Measurements](#)
  - [Event Log](#)
  - [System Log](#)
- Settings
  - [Network](#)
  - [System](#)
  - [Manager Table](#)
  - [Access Control](#)
  - [Time](#)

Click on the **Subscribe** button to receive alarms.

**UPS**

**Network Settings**

**System Settings**

**Access Control**

*Evolution 800* [Help](#)

Enter New Manager Login :

Enter New Password :

Confirm New Password :

Current community Read-Only is :

Change Community Read-Only :

Current community Read/Write is :

Change Community Read/Write :

Change Trap Port Number :

[Help](#)

oom Manager

oom

anges

# From old catalogue .....

- ▶ **SNMP Card 10 Mb**  
for Evolution/Extreme C/ESV+/EX7-10/ EX (US)
- ▶ **SNMP Card 10 Mb**  
for Extreme/3 phase UPSs/Multislot
- ▶ **Solution-Pac WAN (UM-Agent/Client/Console)**  
available on CD + free download

## .....to new catalogue :

- ▶ **SNMP & Web Card 10 /100**  
for Evolution/Extreme C/EX (US)
- ▶ **SNMP & Web Card 10 /100**  
for Extreme/3 phase UPSs/Multislot
- ▶ **Solution-Pac WAN (UM-Agent/Client/console)**

---

- ▶ **XML-Web Card 10/100**  
for Extreme/3 phase UPSs/Multislot
- ▶ **UPS Web-Pac (XML-@gent/XML-Client)**



# MGE integrated web-based architecture

- ▶ XML-Web card & UPS Web-Pac

[www.mgeups.com](http://www.mgeups.com)

THE UNINTERRUPTIBLE POWER PROVIDER

**MGE**  
UPS SYSTEMS

# MGE web-based integrated architecture

SNMP/Web cards

## ▶ XML-Web card Ref 66073

- > form factor : I2C Transverse Communication Card
- > UPS range : Extreme, Galaxy 3000, Galaxy PW and other UPSs through Multislot
- > Not for the slot of Pulsar Evolution / Extreme C / EX !  
(with these models, use XML-@gent or Multislot)



## ▶ UPS Web-Pac (XML-@gent/XML-Client)

- > available only through free download (no CD)
- > available on [www.mgeups.com](http://www.mgeups.com) , download area

# Features

SNMP/Web cards



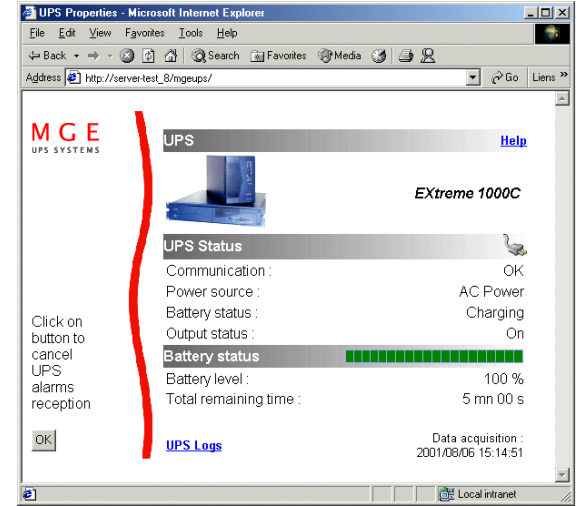
XML-Web card

HTTP/XML  
SSL

**UPS monitoring  
from a simple browser  
(Internet Explorer,  
Netscape Navigator, ....)  
+  
card configuration**

HTTP/XML  
SSL

**system shutdown  
with XML-Client**

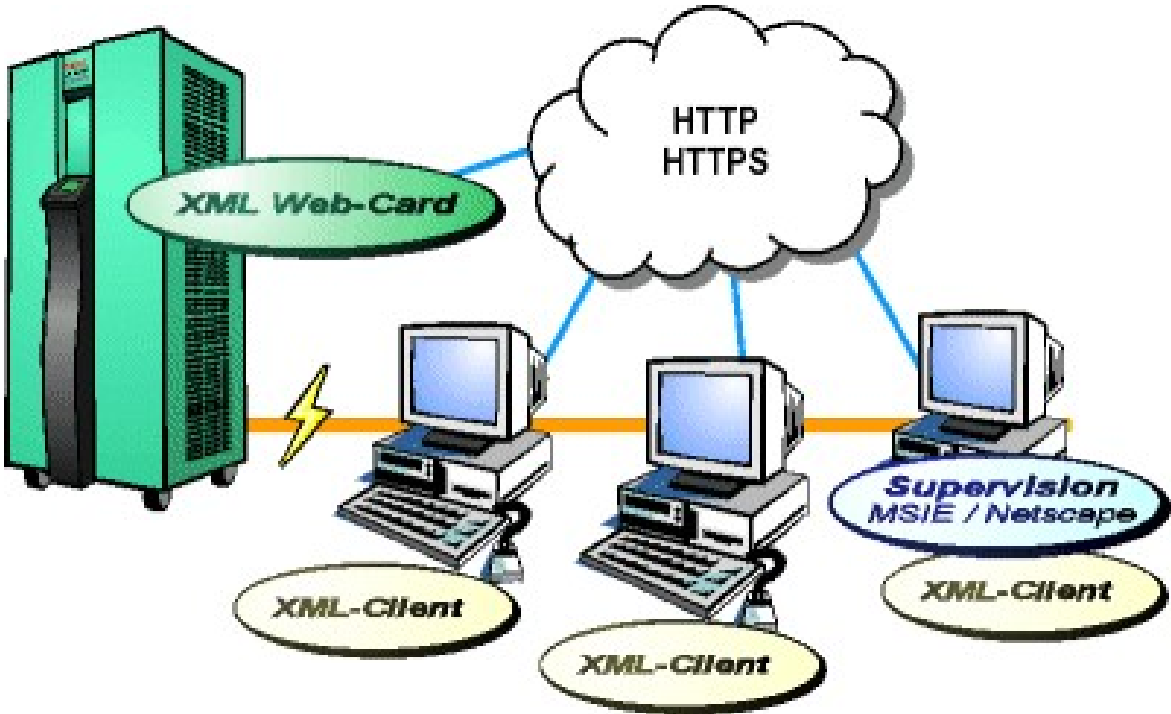


# XML-Web card & UPS Web-Pac

## A fully integrated architecture

- ▶ MGE Web-based solution includes shutdown solutions through a new specific piece of software : **XML-Client**

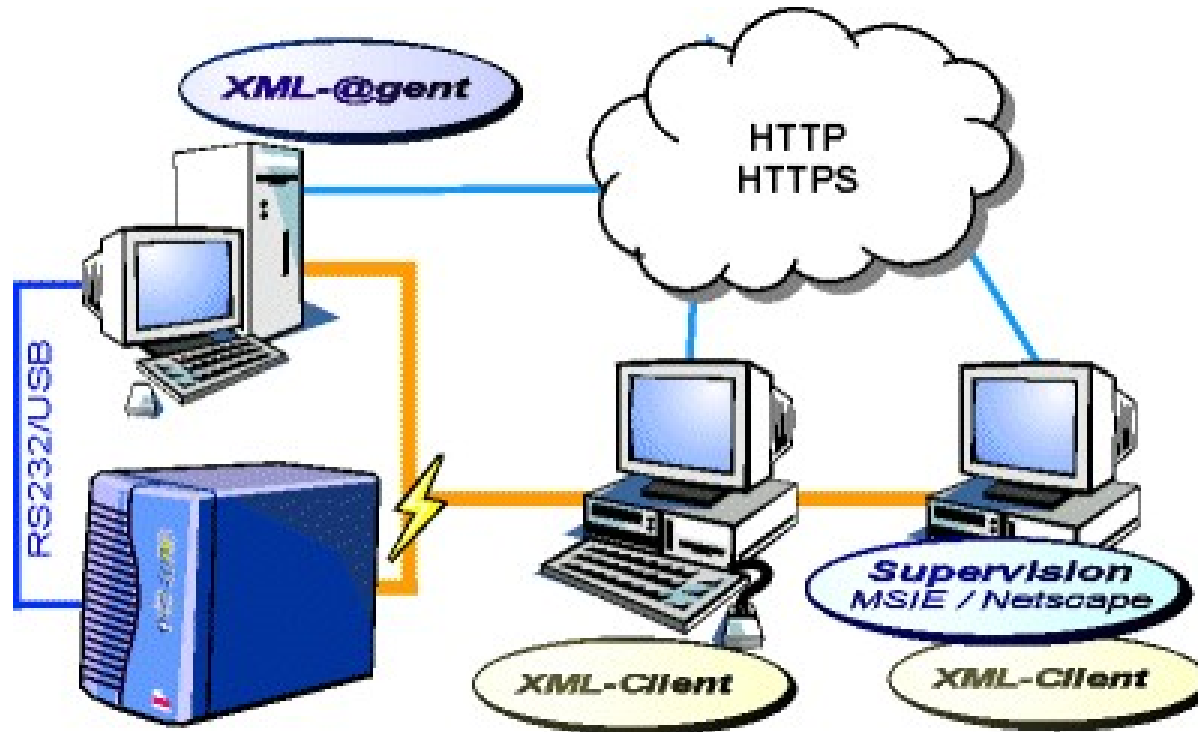
**XML-Client** can be used with **XML Web-card**



# XML-Web card & UPS Web-Pac

## A fully integrated architecture

- XML-Client can be used as well with XML-@gent



## What is XML-Client ?



- ▶ **A software for user notifications, emergency actions and shutdown**
- ▶ **running on any server/station on which actions and shutdown are required**
- ▶ **it is a JAVA-based piece of software using a JVM (Java Virtual Machine) to run on the system**  
**Consequence : the software is almost fully independant of the OS**
- ▶ **XML-Client is notified of UPS events by the XML Web-card or the XML-@gent**

# XML-Client Compatibility list

## ► Now

- > Windows NT/2000/XP
- > Linux Red Hat
- > SUN Solaris 8
- > HP UX

## ► Next steps

- > Linux Suse, Mandrake and Caldera
- > IBM AIX
- > Apple Mac OS X
- > Novell Netware



## XML-Client portability

- ▶ MGE will develop **ready-to-use packages** for the listed OS
  
- ▶ But,  
as XML-Client is a Java-based software,  
it is possible to have it run on **any platform**
  
- ▶ It requires :
  - that the targeted platform is able to use a JVM (Java Virtual Machine)
  - a specialist of the targeted OS
  
- ▶ It means that for advanced users/partners, the compatibility list is from the beginning very wide :
  - **minor Unix / Linux versions**
  - **Apple Mac OS X**
  - **recent versions of OS/2 supporting JVM**
  
- ▶ A detailed procedure is supplied ON-LINE



## The key words

### XML

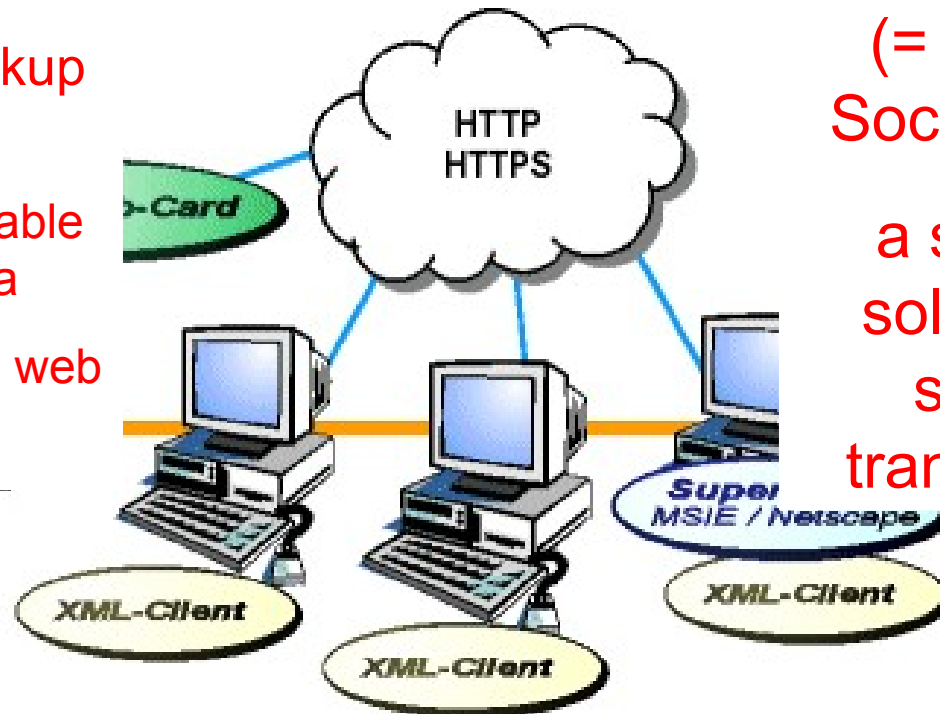
(= eXtended Markup Language)

an easily customizable format for the data transferred over the web

### SSL

(= Secured Socket Layer)

a standard solution for secured transactions



**JVM** (=Java Virtual Machine) : An interpreter of Java code (the Java code remains the same from one system to another)

# MGE differentiation on the market

- ▶ The new SNMP/Web Cards are positioned as equivalent to the competitors ones
- ▶ **XML-Web card** and **UPS Web-Pac** are the MGE differentiating points
  - integrated architecture : Web monitoring + shutdown
  - support a large number of clients :  
up to **50** for XML Web-card  
up to **250** for XML-@gent
  - High Security level thanks to the use of **SSL**
  - alarm **notification** to the browser (also available on SNMP/web cards)
  - portability of XML-Client, the **Java-based** shutdown software
  - XML-Client is a much « lighter » software than UM-Client and can easily be deployed on a large number of systems (using « silent » installation and centralized configuration)
  - potential customization by partners is made easy thanks to **XML**
  - XML-Web card will soon offer **3-phase UPS monitoring**